

# VOICE





## Year 6 Information Evening

Mr Emsley - Vice Principal  
Mr Spence - Assistant Principal

# VOICE





## Welcome to Year 6

What is different to Y5?

- Movement around school
- Independence - greater personal responsibility
- Timings of day
- Focus on reading/numeracy
- Free write Friday
- Homework expectations
- SATs



# SATs

- **Standardised Assessment Tests**
- A marker used by the government of the quality of the education at a school
- Used as a way to learn more about a child's academic strengths and weaknesses.
- They are also used to set GCSE targets and by secondary schools as their intake information.
- They give teachers the chance to see how children are doing in comparison to their peers not only within the same school, but also nationally.
- Every student in Year 6 will do them in May - same test, same time, same rules.

However, they are a snapshot of how a student performs on that day with those questions.... progress means more than that!



# Preparations in School

- Key approach – quality of teaching and curriculum coverage
- Preparing pupils for the actual tests - Practice SATs weeks, PiXL papers, QLAs, PLCs
- Boosters – targeted, small group led by specialist staff
- CGP books – built in retention and recall / revision activities
- Century AI, Spelling Shed, TTRS
- Cross Curricular links – all subjects play their part
- Tutor support (KS2 Specialists) – they know the students well
- Homework Club - Lunchtime 3x per week



# Arrangements for tests

- With own teacher who knows how best to support them
- Area away from other lessons – quiet, focus - y5
- Time allocation generous – atmosphere can be more relaxed
- Clear Instructions – students are used to the regime of tests, usual school expectations
- Students know the timetable – know in advance where to go and can refer to it
- These tests are just routine – chance to show what you can do!



# Timetable

	Lesson 1	Lesson 2	Lesson 3	Lesson 4	Lesson 5
Mon	6x GPVS Paper (45 + 15 mins)		6y GPVS Paper (45 + 15 mins)		6y go into lunch at 1.15, then have KS3 lunch hour
Tues	6x Reading Paper (1 hour)		6y Reading Paper (1 hour)		6y go into lunch at 1.15, then have KS3 lunch hour
Wed	6y Arith Test (30mins)	6y Maths 2 (40 mins)	6x Arith test (30 mins)	6x Maths 2 (40 mins)	6x go into lunch at 1.15, then have KS3 lunch hour
Thurs	6y Maths 3 (40 mins)		6x Maths 3 (40 mins)	Normal	Normal

# Results



Practice SATS are marked by Staff  
QLA and PLC completed and given to students  
Identify areas of strength and development

In May - all papers are externally marked  
Results come back in mid-July

We receive raw scores (the mark on the paper)  
converted to a scaled score up to 120.



# Results

Maths Papers - scores added total /110

Reading Paper - single paper total /50

GPS Paper - single paper total /70

Scaled scores:

100 = met the expected standard

110 = achieving the higher standard

120 = highest possible scaled score

It is not a pass or fail test, progress is the key factor. A student may go from 92 now to 98 in May and that is strong progress



# Key dates for diaries

Practice SATs Week 1: November	w/c 10th
6X Parents' Evening:	Tues 13th Jan
6Y Parents' Evening:	Tues 20th Jan
Practice SATs Week 2:	w/c 2nd March
SATs Week: May*	w/c 11th

# VOICE

ROBERT BLOOMFIELD ACADEMY





# Year 6 SATS 2026

## What Part Can you Play?

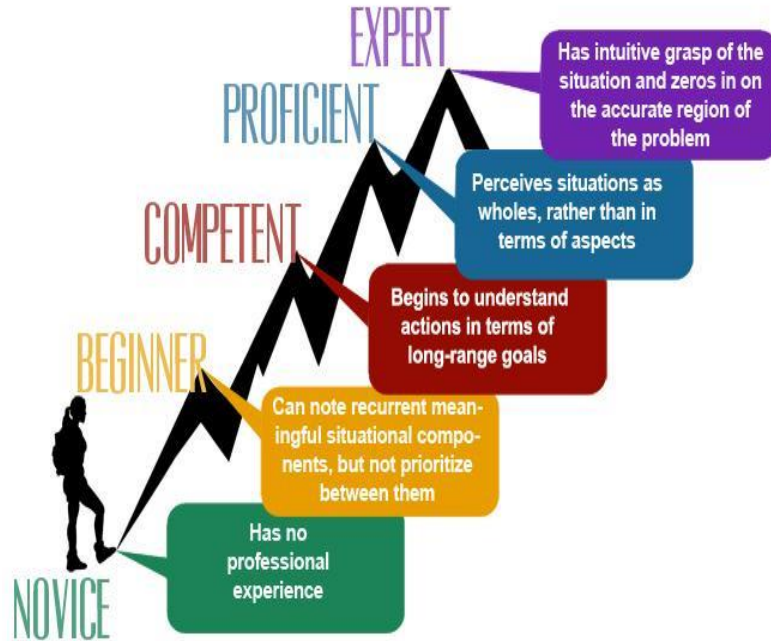
Mr Spence  
Assistant Principal

# Our message at school ...



OUR VALUES, YOUR VOICE

# How do you get really, really good at anything?



OUR VALUES, YOUR VOICE

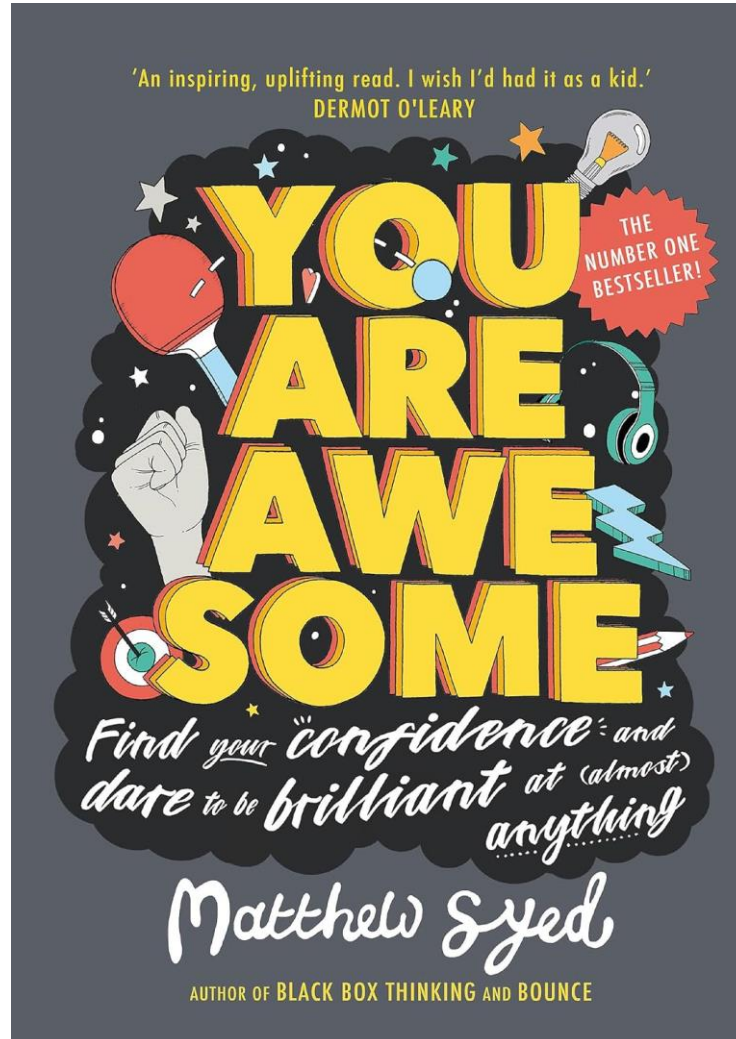


# How do you get really, really good at anything?



- Hard work
- Sacrifice
- Mindset
- Commitment
- Goal setting – SMART TARGETS
- Visualisation of positive outcomes
- Just ‘show up’
- Take the opportunities
- Try your best
- Get a tiny bit better every day

# Book recommendation



# Data rich



Algebra	
Find pairs of numbers that satisfy an equation with 2 unknowns/express missing number problems algebraically	G
Algebra/Measurement	
Use simple formulae/use all four operations to solve problems involving measures	R
Calculations	
Add a 3-digit number and tens mentally	G
Add numbers with up to 4 digits	G
Divide numbers up to 4 digits by a 2-digit number	A
Divide numbers up to 4 digits by a 2-digit number/solve problems involving division	G
Know and use the vocabulary of prime numbers/recognise and use square numbers	R
Multiply 2-digit and 3-digit numbers by a single digit	G
Multiply by 0	G
Multiply multi-digit numbers up to 4 digits by a 2-digit number	G
Multiply numbers up to 4 digits by a 2-digit number/solve problems involving the four operations	G
Multiply whole numbers by 10, 100 or 1,000	G
Multiply whole numbers by 10, 100 or 1,000	G
Solve addition and subtraction multi-step problems in contexts, deciding which operations to use	G
Solve addition and subtraction problems in context	G
Solve missing number problems/add and subtract numbers with up to 3 digits	A
Solve problems involving multiplication and division/recall and use multiplication and division facts for the 3, 4 and 8	G
Solve problems involving multiplication and division using knowledge of factors and multiples	R
Solve problems involving the 4 operations and combinations of these	G
Solve problems using knowledge of factors and multiples	R
Subtract numbers with more than 4 digits	G
Subtract numbers with up to 4 digits	R
Use factor pairs and commutativity in mental calculations/recall and use multiplication facts for the 3, 4 and 8 multiplication	G
Use knowledge of the order of operations to calculate	R
Use place value, known and derived facts to divide mentally	G
Use place value, known and derived facts to multiply mentally	G

# Importance of Parents/Carers



<https://www.educatefirst.co.uk/student-parent-zone/sats/top-10-tips-for-sats/>

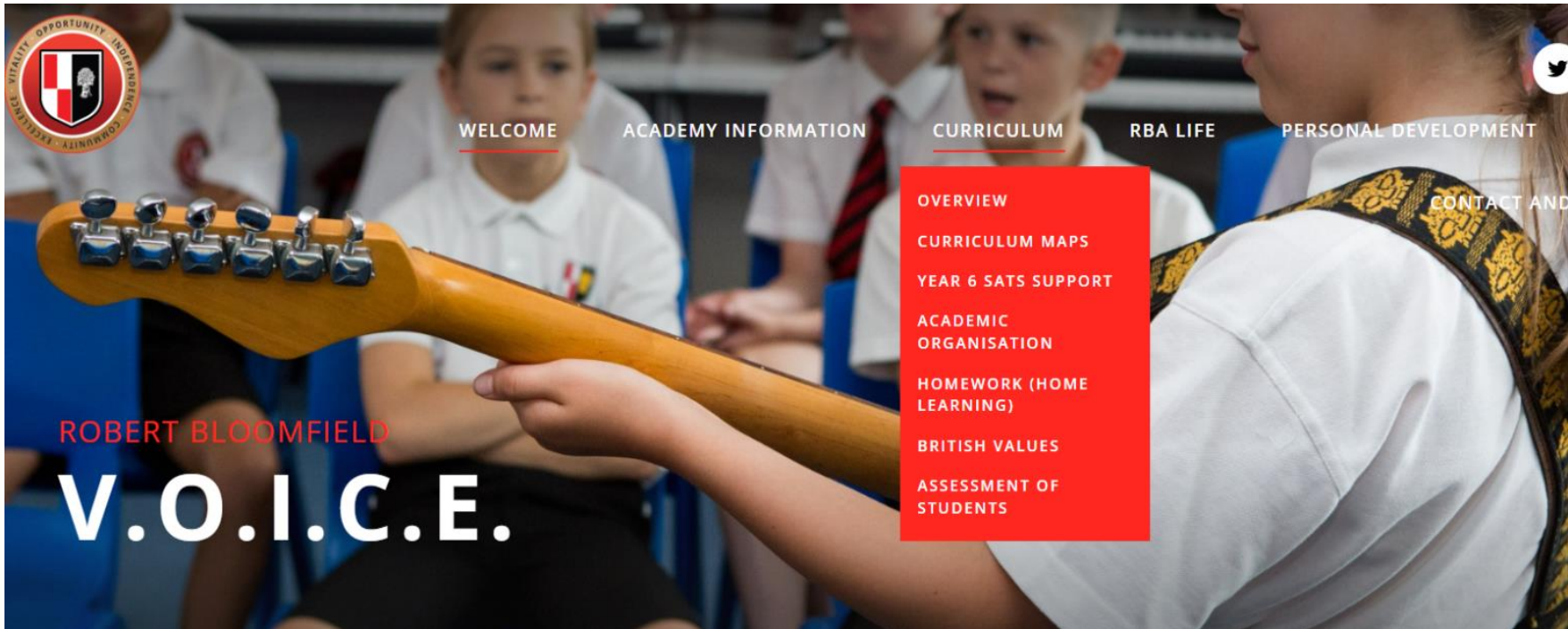
- Do not avoid
- Devise a revision plan/routines
- Create the right environment
- Equip them
- Stay positive and motivated
- Offer your help
- Eat well
- Sleep well
- Don't burn them out
- Show them you care

**OUR VALUES, YOUR VOICE**

# Homework and home study



# Homework and home study



[WELCOME](#)

[ACADEMY INFORMATION](#)

[CURRICULUM](#)

[RBA LIFE](#)

[PERSONAL DEVELOPMENT](#)

[CONTACT AND](#)

OVERVIEW

CURRICULUM MAPS

YEAR 6 SATS SUPPORT

ACADEMIC ORGANISATION

HOMework (HOME LEARNING)

BRITISH VALUES

ASSESSMENT OF STUDENTS

ROBERT BLOOMFIELD

# V.O.I.C.E.

# OUR VALUES, YOUR VOICE



# Homework and home study



## Year 6 SATs Support



# Marginal gains

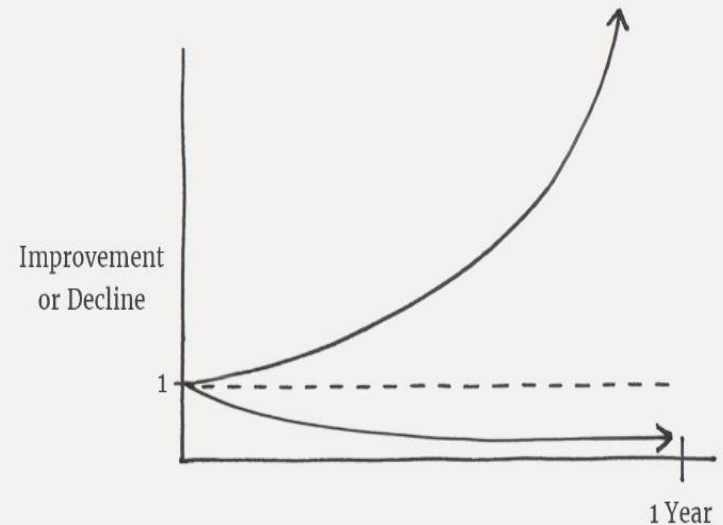


*'Success is a few simple disciplines, practiced every day; while failure is simply a few errors in judgement repeated every day.'*

**Jim Rohn**

## The Power of Tiny Gains

$$\begin{aligned} 1\% \text{ better every day} & \quad 1.01^{365} = 37.78 \\ 1\% \text{ worse every day} & \quad 0.99^{365} = 0.03 \end{aligned}$$



# Rewards



# Maximum Effort



- A new style of points
- Exclusive to Year 6 and worth 3 VOICE points
- Best learners of the lesson
- Certificates/rewards afternoons
- The big Prize!



# Finally



Ideally all pupils should be ready for the challenge of SATs.

It is their chance to show just what they can do!

They can't fail them.

It is all about confidence and giving it their best.